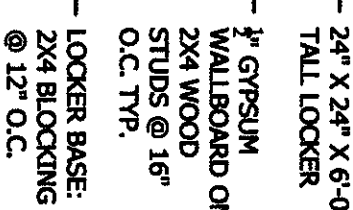
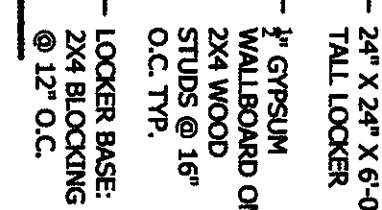


APPARATUS



R-3 (SLEEPING AREA, RECREATION, KITCHEN UNLIMITED)	26,000 SF
S-2 (APPARATUS BAY, STORAGE)	23,000 SF
B (OFFICE)	

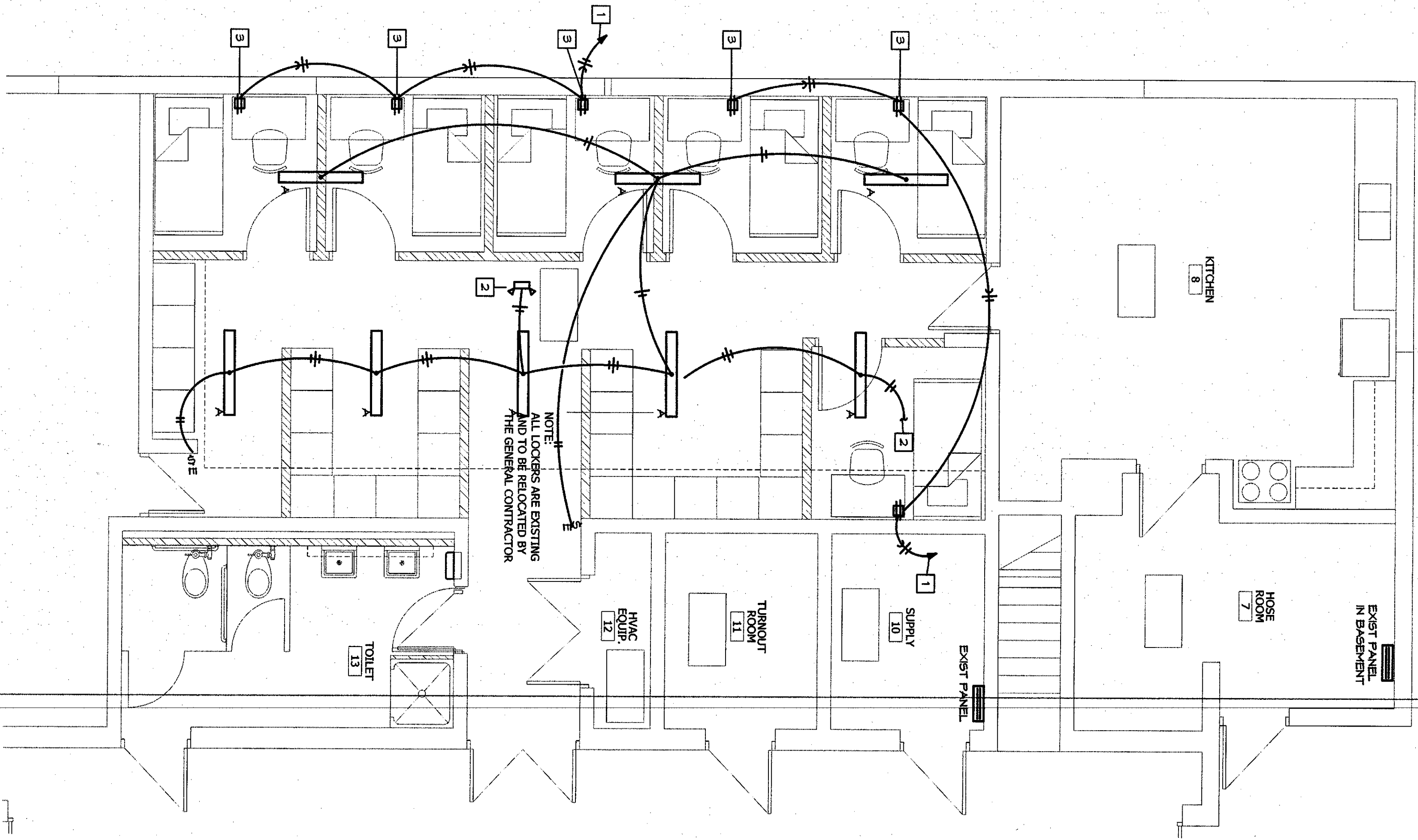


an interior renovation for:
STATION
9TH AND QUINDERO
KANSAS CITY, KANSAS

11/07/17

LIGHT FIXTURE SCHEDULE					
MARK NO.	MANUFACTURER & CATALOG NUMBER	VOLTS MATTS	LAMPS	DESCRIPTION	EQUIVALENT MANUFACTURERS
A	WILLIAMS SLF-4-152/835-HIA- UNV	UNV 50	LED 3500°K	4' SURFACE MOUNT LED LIGHT WITH FROSTED ACRYLIC LENS	COOPER LITHONIA OR EQUAL
⤵	DUAL-LITE EV2	UNV 1	NCL	EMERGENCY LIGHT WITH TWIN ADJUSTABLE 1" BATTERY, MOUNT AT 7'-6" TO CLEAR OBSTACLES. (PROVIDES 1 FC AVG. ON 21' CENTER FIXTURE SPACING)	SURE-LITES LITHONIA OR EQUAL

- ELECTRICAL PLAN NOTES:
- 1 PROVIDE 20 AMP 1 POLE BREAKER IN EXISTING PANEL AND CONNECT WITH #12 WIRE (PANEL IN BASEMENT)
 - 2 CEILING MOUNT EMERGENCY LIGHT.
 - 3 DEVICES AND CONDUIT TO BE SURFACE MOUNTED ON EXISTING WALL UTILISING SURFACE MOUNT RACEWAYS.



ELECTRICAL FLOOR PLAN
SCALE: 1/4" = 1'-0"
NORTH

ARCHITECTS
1185 ADAMS
S U I T E 1 3 0
KANSAS CITY, KS 64103
(813) 342-8120
(FAX) 342-8131

an interior renovation for:
FIRE STATION NO. 5
9TH AND QUINDERO
KANSAS CITY, KANSAS

DESIGN BY BC
DRAWN BY KAW
JOB NO.
DATE 11/29/2017
REVISIONS

KANSAS
PE COA #E-369

This drawing was prepared by BC Engineers, Incorporated, a registered professional engineering firm in the State of Kansas. The drawing is prepared in accordance with the Kansas Electrical Code and the National Electrical Code. The drawing is not to be used for any other purpose without the written consent of BC Engineers, Incorporated. The drawing is not to be used for any other purpose without the written consent of BC Engineers, Incorporated.

BC ENGINEERS
INCORPORATED
5720 Roadside Shawnee, Mo. 66203 (913) 262-1772

E1

